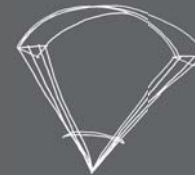




24TH SPECIAL TACTICAL SQUADRON FORT BRAGG, NORTH CAROLINA

USING INNOVATION AND COLLABORATION, AN ALL-ENCOMPASSING MASTER PLAN AND FULL-SERVICE NEW BUILDING DESIGNS ARE COMBINED FOR THE 24TH SPECIAL TACTICAL SQUADRON IN FORT BRAGG, NORTH CAROLINA. MASTER PLANNING, ARCHITECTURE, ENGINEERING AND INTERIORS SERVICES WERE EMPLOYED ON THIS PROJECT BY 6 DIFFERENT FIRMS FOR ONE MILITARY MISSION.



ALPHA RHO CHI

PLANNING | ARCHITECTURE | TECHNOLOGY

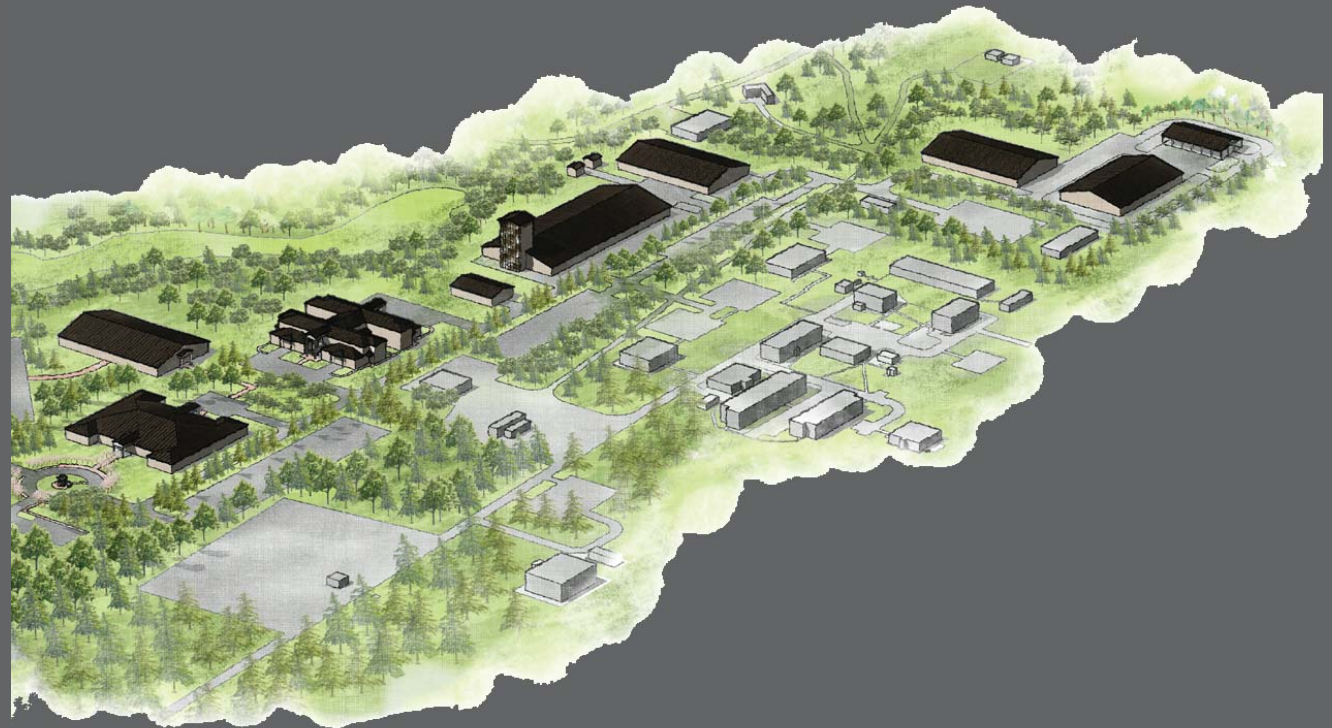
INNOVATION THROUGH COLLABORATION



24TH SPECIAL TACTICAL SQUADRON
FORT BRAGG, NC

MASTER PLANNING PHASE

THE NEW MASTER PLAN FOR THE 24TH SPECIAL TACTICS SQUADRON, A UNIT UNDER THE 720TH SPECIAL TACTICS GROUP AND THE AIR FORCE SPECIAL OPERATIONS COMMAND, IS A NEW CONSOLIDATED TRAINING CAMPUS FOR THE 24TH STS CONSISTING OF EIGHT BUILDINGS FOR TRAINING, ADMINISTRATIVE, AND MEDICAL PERSONNEL. DURING A SERIES OF CHARRETTES, DETAILED ANALYSES OF THE EXISTING CONDITIONS, PROGRAMMATIC REQUIREMENTS, PLANNING AND SITE DEVELOPMENT CHALLENGES WERE DISCUSSED AND SOLVED INVOLVING THE CLIENT, VARIOUS END-USERS, PLANNERS, ARCHITECTS, ENGINEERS, AND UTILITY COMPANIES. THIS MULTI-PHASED PROJECT, PLANNED FROM THE FISCAL YEAR 2010-2015, REQUIRED THE COORDINATION AND COLLABORATION OF MANY INDIVIDUALS AND PROFESSIONS.



ALPHA RHO CHI

PLANNING | ARCHITECTURE | TECHNOLOGY
INNOVATION THROUGH COLLABORATION



24TH SPECIAL TACTICAL SQUADRON
FORT BRAGG, NC

MASTER PLANNING PHASE -->
BUILDING DESIGN

AFTER THE INITIAL CHARRETTES WERE COMPLETED, DETAILED PHASING PLANS FOR THE BUILDING CONSTRUCTION AND UTILITY INTERFACES WERE DEVELOPED. ADDITIONAL SITE UTILITIES WERE NEEDED TO SUPPORT AND UPDATE THIS RURAL SITE. SINCE THE ADJACENT SITE IS AN ACTIVE MILITARY FACILITY, FURTHER COORDINATION WAS NEEDED TO LOCATE SAFE ZONES FOR CONSTRUCTION WORKERS AND SCHEDULING CONSTRUCTION WORK IN CONJUNCTION WITH A FULLY OPERATIONAL MILITARY FACILITY. ONCE ALL THE SCHEDULING AND COORDINATION ISSUES WERE RESOLVED, PHASE I OF THE MASTER PLAN WAS IMPLEMENTED.



ANNUAL PHASES, FISCAL YEAR 2011



FISCAL YEAR 2014



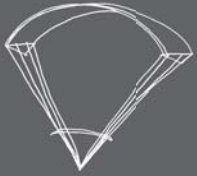
ALPHA RHO CHI

PLANNING | ARCHITECTURE | TECHNOLOGY
INNOVATION THROUGH COLLABORATION



24TH SPECIAL TACTICAL SQUADRON FORT BRAGG, NC

PHASE I - THE TEAM BUILDING, FINAL DESIGN



PHASE I BEGAN WITH THE DESIGN AND CONSTRUCTION OF THE TEAM BUILDING, A CENTRAL PIECE OF THE OVERALL MASTER PLAN FOR THE NEW 24TH STS TRAINING CAMPUS. SINCE THIS WAS THE FIRST BUILDING FOR THE NEW CAMPUS, SPECIAL CONSIDERATION WAS GIVEN TO SETTING THE DESIGN TONE AND HOW FUTURE BUILDINGS WOULD BE DESIGNED. REFERRING TO THE PRIMARY MISSION OF THE END-USER, THE AIR FORCE SPECIAL OPS, THE IDEA OF THE PARACHUTE WAS INTRODUCED AS A VITAL DESIGN FEATURE. DUE TO THE SECURE NATURE OF ALL THE BUILDINGS ON THE CAMPUS, NO WINDOWS WERE ALLOWED TO BE USED IN THE DESIGN. IN PLACE OF HEAVY SOLID MASONRY, A SPECIAL TRANSLUCENT SCREEN SYSTEM WAS INCORPORATED INTO THE DESIGN TO LIGHTEN THE FAÇADE. IN ADDITION TO CREATING A SECURE FACILITY, THE CLIENT REQUESTED THAT ALL THE BUILDINGS PROPOSED IN THE MASTER PLAN BE ABLE TO MEET A LEED SILVER CERTIFICATION. EXTENSIVE DESIGN MEETINGS WERE CONDUCTED INVOLVING EVERYONE FROM MECHANICAL ARCHITECTS, INTERIOR DESIGNERS, CIVIL MECHANICAL AND STRUCTURAL ENGINEERS TO THE FACILITY MAINTENANCE PERSONNEL IN CHARGE OF COORDINATING THE OPERATION OF THE BUILDINGS DURING THEIR EXPECTED USAGE.



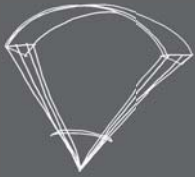
ALPHA RHO CHI

PLANNING | ARCHITECTURE | TECHNOLOGY
INNOVATION THROUGH COLLABORATION

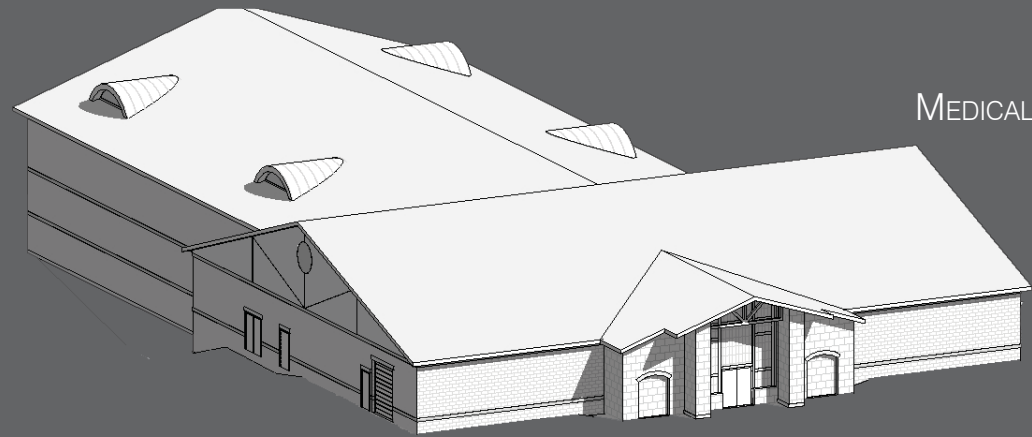


24TH SPECIAL TACTICAL SQUADRON
FORT BRAGG, NC

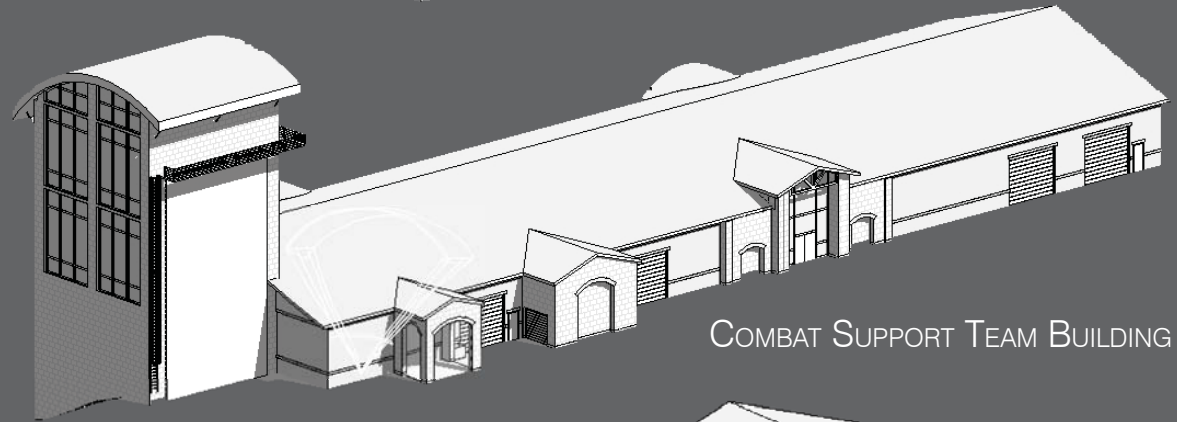
PHASE II -
THE MEDICAL BUILDING,
THE COMBAT SUPPORT TEAM BUILDING,
THE HEADQUARTERS BUILDING



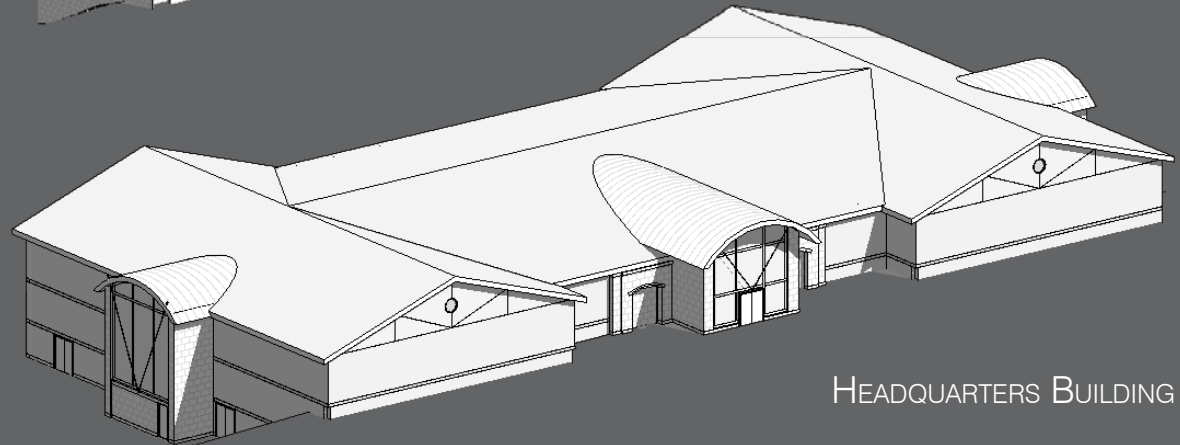
PHASE II OF THE MASTER PLAN INCLUDES 3 NEW BUILDINGS: HEADQUARTERS & OPERATIONS FACILITY; MEDICAL CLINIC, PHYSICAL THERAPY & AQUATIC TRAINING FACILITY; & THE COMBAT SUPPORT TEAM FACILITY. ONE OF THE FIRST STEPS OF PHASE II WAS TO CREATE A FUTURE DEVELOPMENT REPORT (FDR) TO REFINE THE BUILDING PROGRAMMING AND PRELIMINARY CONCEPT DESIGNS FOR THE 3 BUILDINGS. DURING THE COURSE OF THE DEVELOPMENT OF THE FDR, INFORMATION WAS OBTAINED THROUGH THE USE OF WRITTEN QUESTIONNAIRES AND IN-PERSON INTERVIEWS WITH REPRESENTATIVES OF THE USER GROUPS IN EACH BUILDING. SPACE REQUIREMENTS, DESIRABLE ADJACENCIES, AND SPECIAL NEEDS OF THE USERS WERE GENERATED FROM THESE SURVEYS AND INTERVIEWS, APPLICABLE CODES, THE DEPARTMENT OF DEFENSE GUIDANCE, AND US ARMY METRICS, THEN CONCEPTUAL PLANS WERE DEVELOPED, PRESENTED AND COLLECTIVELY ANALYZED. IN ADDITION TO THE CONCEPTUAL FLOOR PLANS, CONCEPTUAL SITE PLANS WERE DEVELOPED IN COORDINATION WITH THE PREVIOUSLY COMPLETED PHASE 1 DESIGN DRAWINGS AS WELL AS COORDINATED WITH THE LOCAL UTILITY COMPANIES. THE NEW FACILITY CONCEPT PLANS WERE DEVELOPED TO IMPROVE OVERALL FUNCTION OF THE CLIENT AND USER AND ACCOMMODATE FUTURE GROWTH, WHILE MEETING THE MISSION NEEDS. THE FDR PRESENTS THE RECOMMENDED BUILDING PROGRAM TO IMPLEMENT PHASE 2 OF THE CONTINUING DEVELOPMENT OF THE 24TH STS FACILITY.



MEDICAL BUILDING



COMBAT SUPPORT TEAM BUILDING



HEADQUARTERS BUILDING



ALPHA RHO CHI

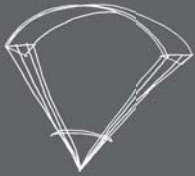
PLANNING | ARCHITECTURE | TECHNOLOGY

INNOVATION THROUGH COLLABORATION



24TH SPECIAL TACTICAL SQUADRON
FORT BRAGG, NC

SUMMARY AND DESIGN TEAM



THE SUCCESS OF THE PROJECT DEPENDED ON THE COLLABORATION OF A DIVERSE AND TALENTED TEAM. WITH ALL PROJECT MEMBERS WORKING AS ONE TEAM IN A COLLABORATIVE ENVIRONMENT, THE 24TH SPECIAL TACTICAL SQUADRON WILL BE BETTER PREPARED FOR THE CRITICAL MISSIONS AHEAD.

CLIENT: US ARMY CORPS OF ENGINEERS,
SAVANNAH DISTRICT

END USER: 24TH SPECIAL TACTICAL SQUADRON

DESIGN TEAM:

GREENHORNE & O'MARA *RALEIGH, NC*
PROJECT MANAGEMENT &
CIVIL ENGINEERING: WILL BYNUM, PE
LARRY LONGO, PE

FCB ENGINEERING *RALEIGH, NC*
FIRE PROTECTION ENGINEER: FRED BRADLEY, PE

PHASE I:

IBI GROUP *RALEIGH, NC*
STRUCTURAL ENGINEER: JOHN BAKER, PE
MECHANICAL ENGINEER: MIKE CLARK, PE

KNOTT BENSON *RALEIGH, NC*
ENGINEERING ASSOCIATES
ELECTRICAL ENGINEER: DALE BENSON, PE

PHASE II:

GREENHORNE & O'MARA *RALEIGH, NC*
STRUCTURAL ENGINEER: PAUL ROEPNACK, PE

EDI ENGINEERING *RALEIGH, NC*
MECHANICAL ENGINEER: GLENN KEY, PE
ELECTRICAL ENGINEER: TOM VELEZ, PE
PLUMBING ENGINEER: SCOTTIE MILLER

THE ONYX GROUP *ALEXANDRIA, VA*
PLANNING: NANCY VIGNA
ARCHITECTURE: AL MCCOUBREY, AIA
CHRISTOPHER LENT,
CFM, CID
KATE SHALATY,
Assoc. AIA

INTERIORS: BRANDON BURGESS,
Assoc. AIA, LEED AP BD+C
KRISTEN RUCH,
IIDA, LEED AP ID+C
CLAIRANNE PESCE
Assoc. IIDA, LEED AP ID+C

INFORMATION SYSTEMS *FORT BRAGG, NC*
ENGINEERING COMMAND
INFORMATION TECHNOLOGY: GUY WALL

ALPHA RHO CHI BROTHER: KRISTEN RUCH,
METAGENES



ALPHA RHO CHI

PLANNING | ARCHITECTURE | TECHNOLOGY

INNOVATION THROUGH COLLABORATION

